



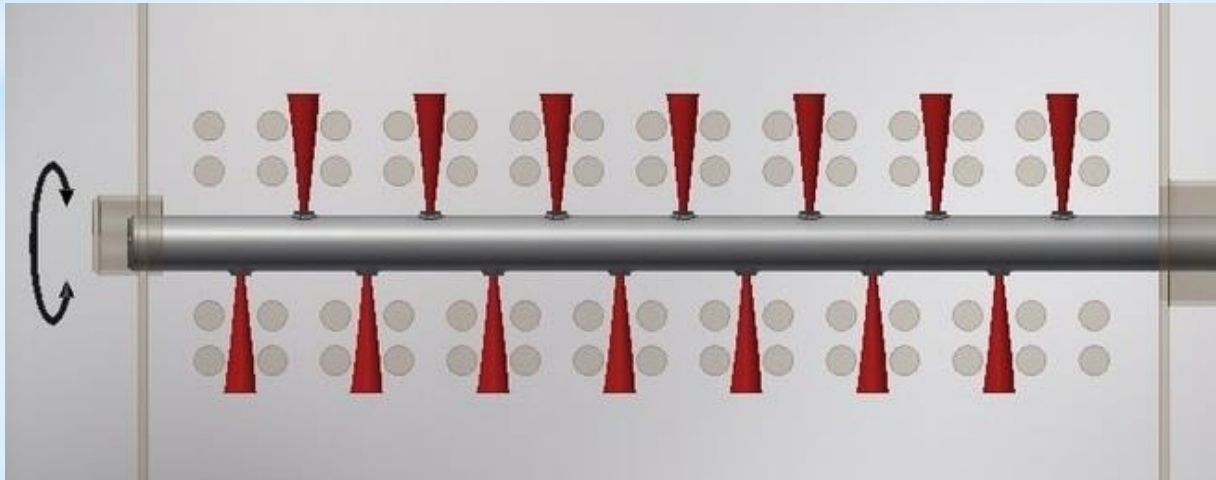
SEELEN

ENGINEERING

Rotating Blower SD79E

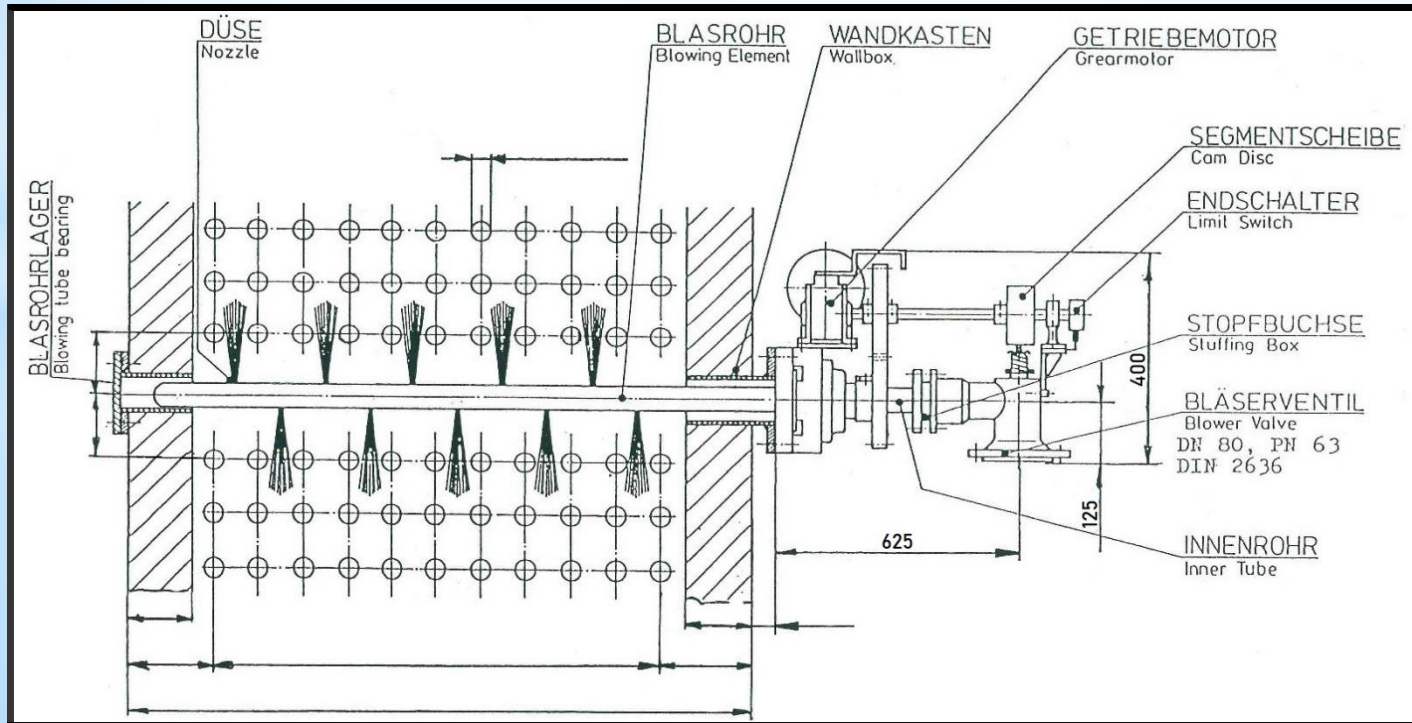
Cleaning of boiler tubes by rotating element

- Application:
 - Low or medium level of fouling
 - Flue gas temperature under 800°C
- Blowing tube equipped with nozzles over the whole length rotating over the flue gas paths
- During the blowing process the blowing tube rotates
- Blowing angle, blowing radius and number of rotations can be adjusted to the conditions



Basic parameters

- Blowing angle: 30° - 360°
- Blowing medium: Steam or air
- Rotation: Driven by electric gear motor

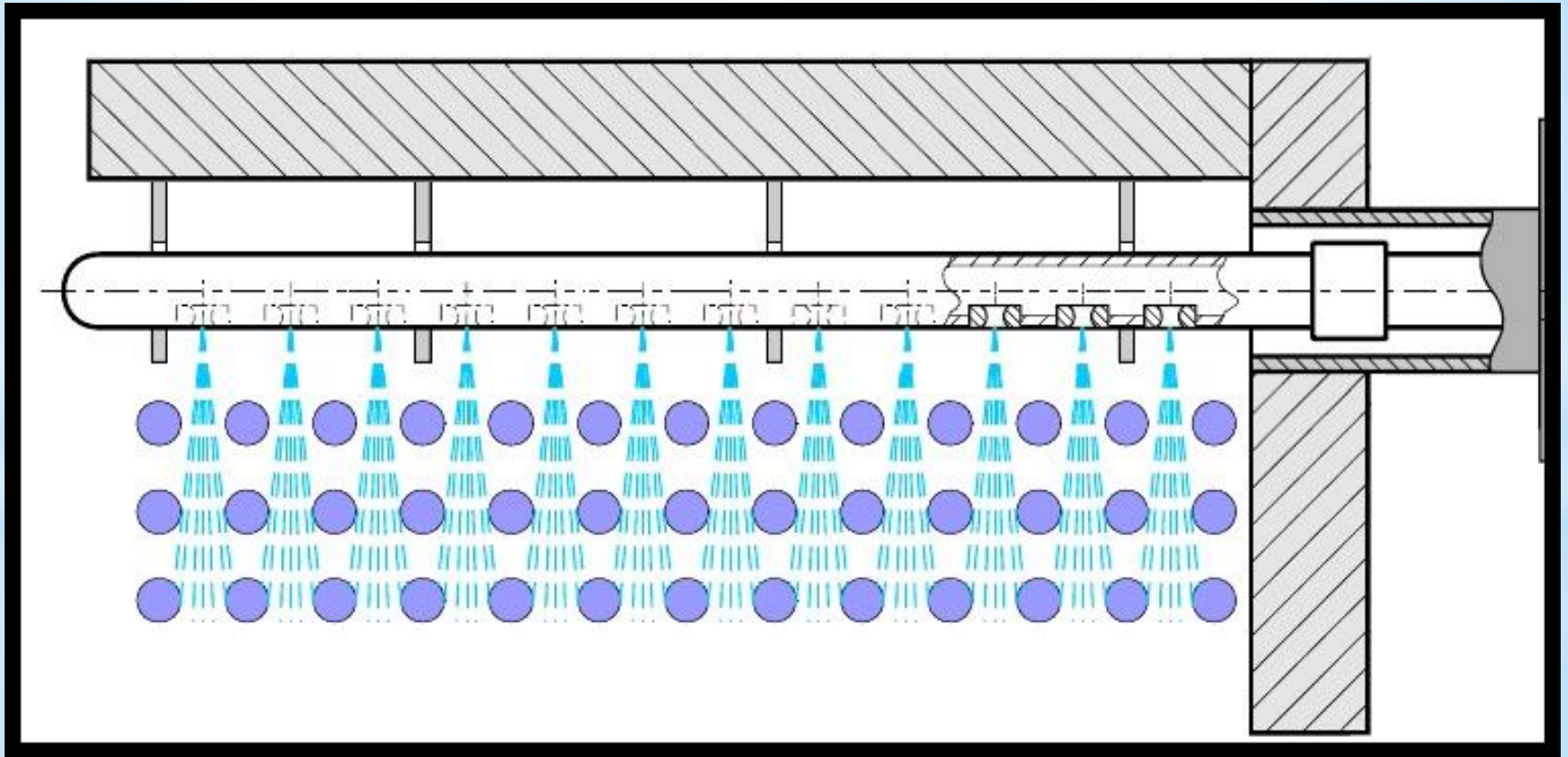


Material grade

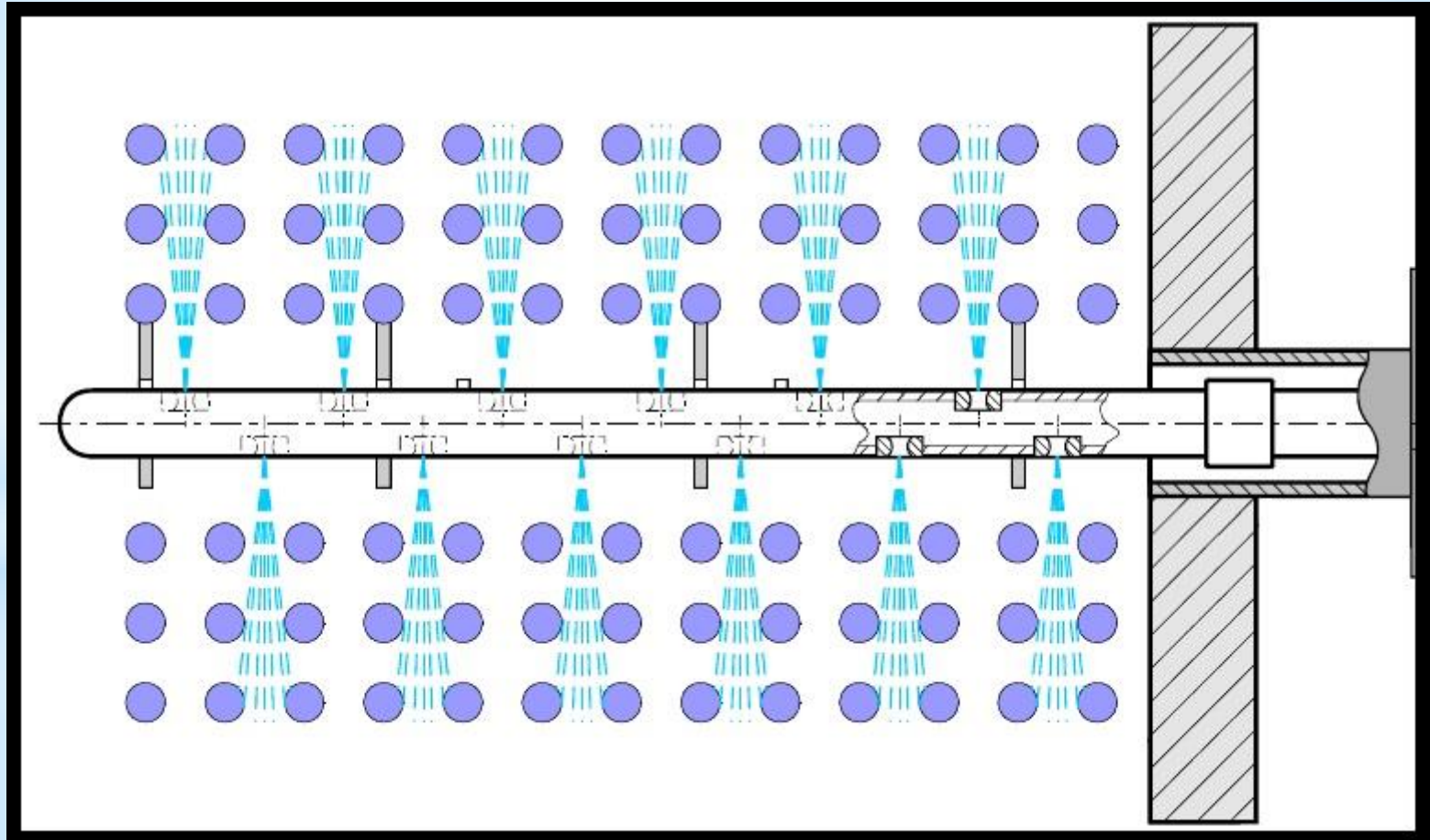
- Blower valve: Cast steel, adjustable blowing pressure
- Feed tube: Honed stainless steel
- Blowing tube: Heat resistant stainless steel, variable nozzle quantity
- Tube bearing: Heat resistant stainless steel



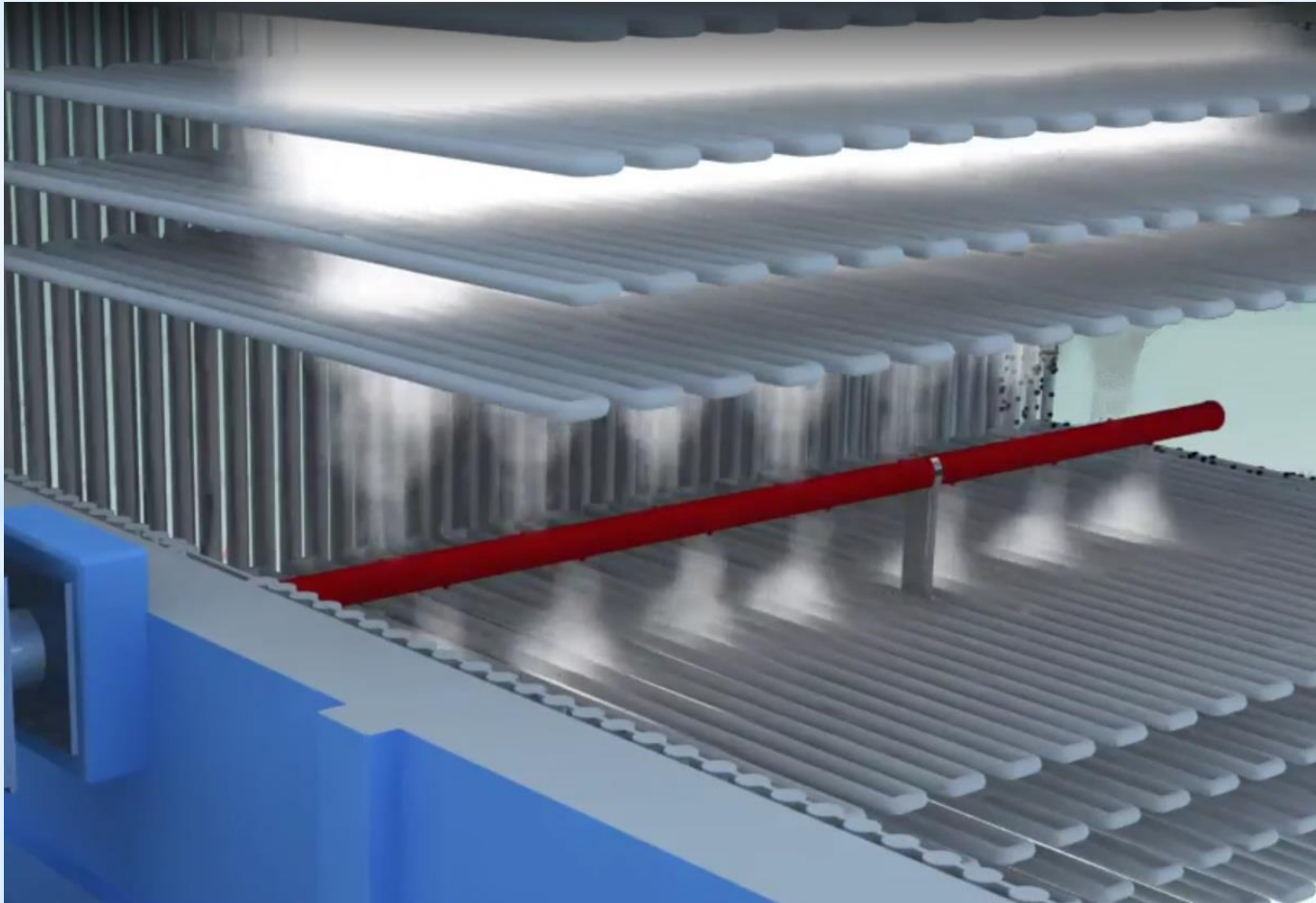
Blowing tube for 30° – 360°



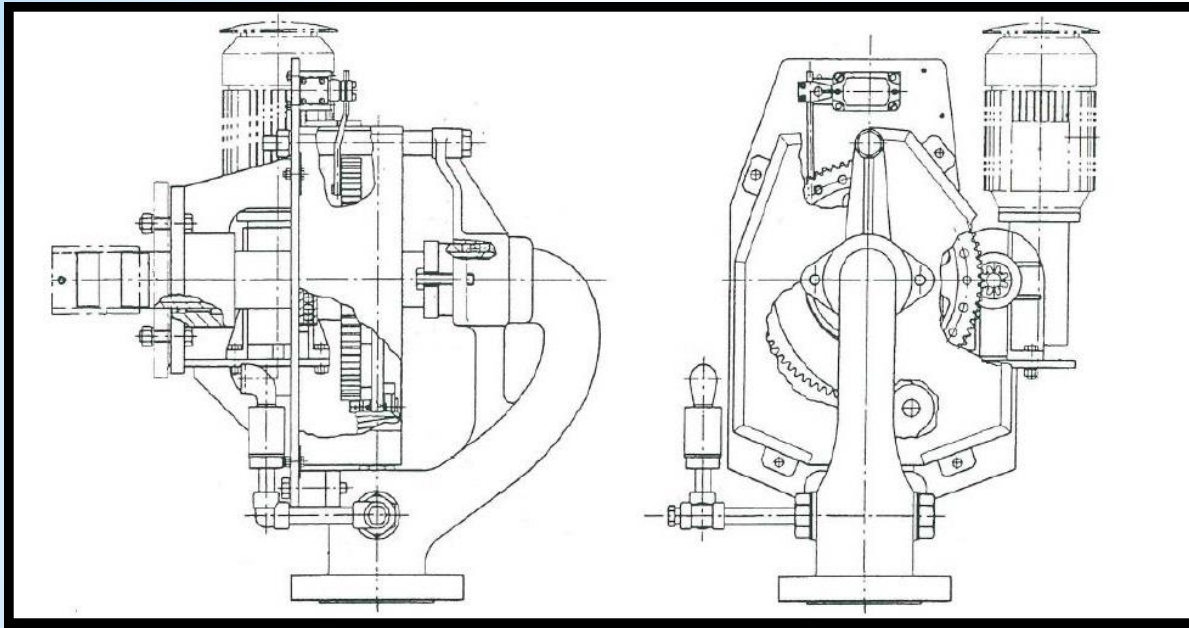
Blowing tube for 180° – 360°



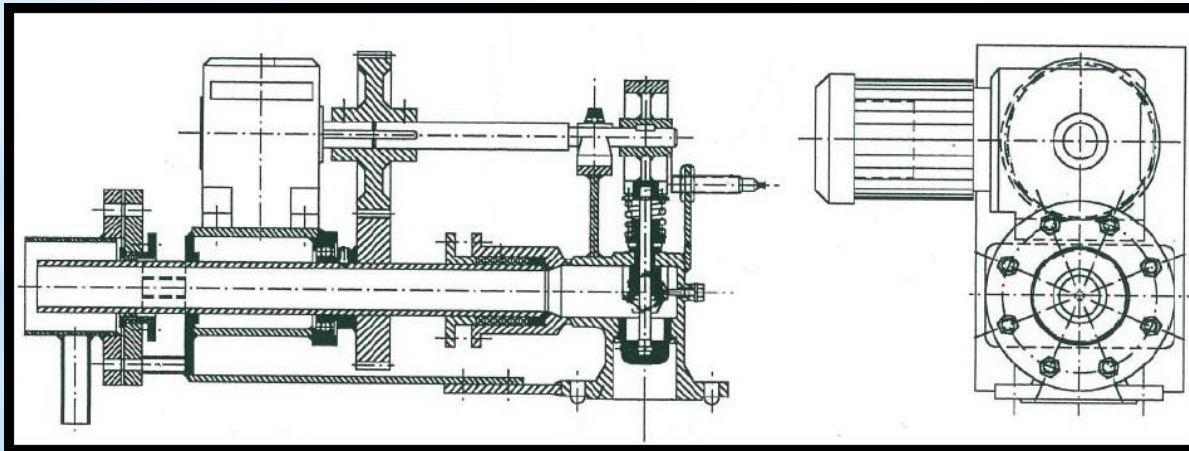
Cleaning coverage



Comparison



Heavy old type of rotating sootblower



*Compact and light
SEELEN SD79E*

Advantages of the SEELEN SD79E

- High reliability of the SEELEN SD79E rotating sootblower
 - Higher efficiency of heat transfer
 - Less boiler shut downs
 - Less maintenance effort and cost
- Improved wall box sealing
 - Less pollution through dust discharge

- ✓ *Less costs in the long run*
- ✓ *Protection of the environment*

REFERENCES



made in germany